

To ensure better communication between office and our seafarers we have established for everyone e-mail accounts. We have used following formula to create such e-mail boxes:

[firstname.lastname@seatrans.pl](mailto:firstname.lastname@seatrans.pl)

You can access your e-mail box via any web browser or any SMTP\POP3 client (for example: *Mircrosoft Outlook* or *Outloot Express*).

### 1. Using e-mail system via web browser:

- Start any web browser (for example: *Internet Explorer*)
- Open page: [www.seatrans.pl](http://www.seatrans.pl)
- Switch to: *linki*
- Click on: *Serwer pocztowy: login*

Seatrans Poland - praca na morzu - Microsoft Internet Explorer

File Edit View Favorites Tools Help

← Back → Search Favorites Media

Address <http://www.seatrans.pl/>

Google G Go 46 blocked Check

**SEATRANS**

O firmie ▶  
Rekrutacja ▶  
Nasz zespół ▶  
**Linki ▶**  
Mapka Gdyni ▶  
Kontakt ▶

**Lista użytecznych linków:**

- Strona główna armatora Seatrans AS: [www.seatrans.no](http://www.seatrans.no)
- Akademia Morska w Gdyni: [www.am.gdynia.pl](http://www.am.gdynia.pl)
- Akademia Morska w Szczecinie: [www.wsm.szczecin.pl](http://www.wsm.szczecin.pl)
- Szkoła Morska w Gdyni sp. z o.o.: [www.morska.edu.pl](http://www.morska.edu.pl)
- Serwer pocztowy: [login](#)

- Following login window will appear:

#### Logowanie do aplikacji

Podaj nazwe konta e-mail:

Haslo:

Zaloguj sie

- Enter your e-mail address as an account name and password you have received from us

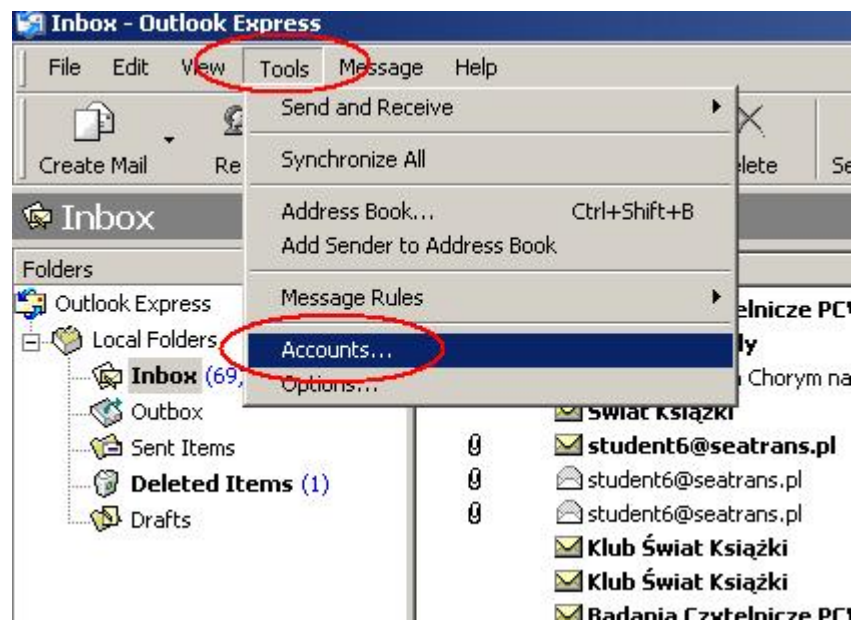
- Click on *Zaloguj sie* to open your e-mail box.



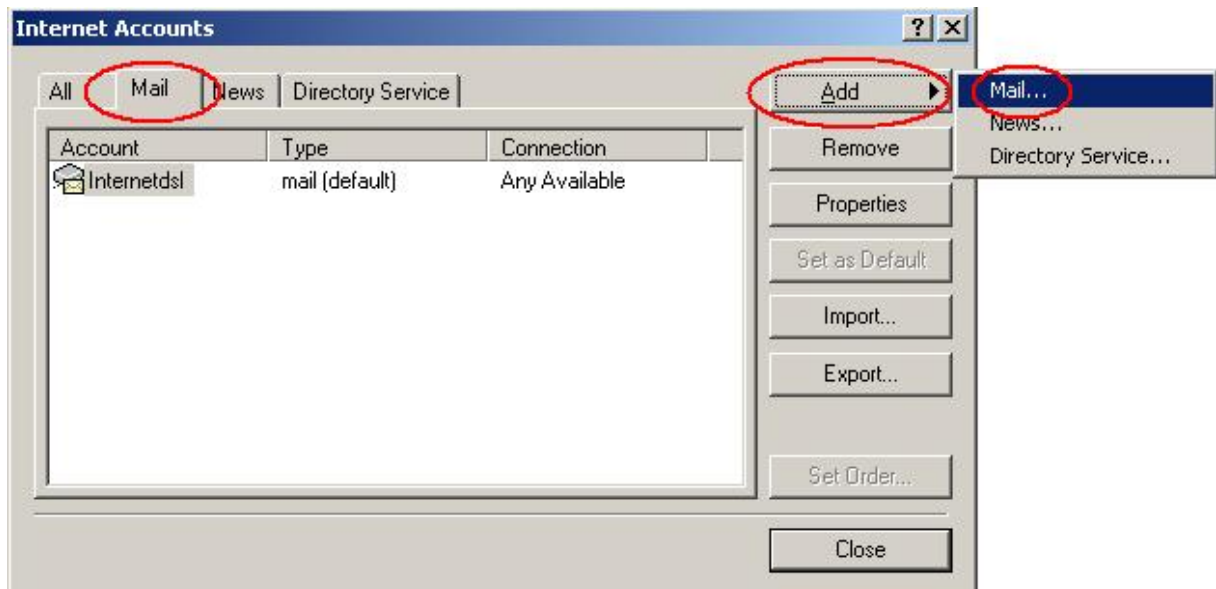
- Please use user guide located under *Pomoc*

## 2. Outlook Express configuration:

- Start *Outlook Express* and go into menu *Tools\Accounts*



- Click on *Mail* tab and *Add/Mail...*



- Follow the pictures attached below to configure your e-mail box:



**Internet Connection Wizard** [X]

**Internet E-mail Address** [Help]

Your e-mail address is the address other people use to send e-mail messages to you.

E-mail address:

For example: someone@microsoft.com

< Back   Next >   Cancel

**Internet Connection Wizard** [X]

**E-mail Server Names** [Help]

My incoming mail server is a  server.

Incoming mail (POP3, IMAP or HTTP) server:

An SMTP server is the server that is used for your outgoing e-mail.

Outgoing mail (SMTP) server:

< Back   Next >   Cancel

**Internet Connection Wizard** [X]

**Internet Mail Logon** [Help Icon]

Type the account name and password your Internet service provider has given you.

Account name:

Password:

Remember password

If your Internet service provider requires you to use Secure Password Authentication (SPA) to access your mail account, select the 'Log On Using Secure Password Authentication (SPA)' check box.

Log on using Secure Password Authentication (SPA)

< Back   Next >   Cancel

**Internet Connection Wizard** [X]

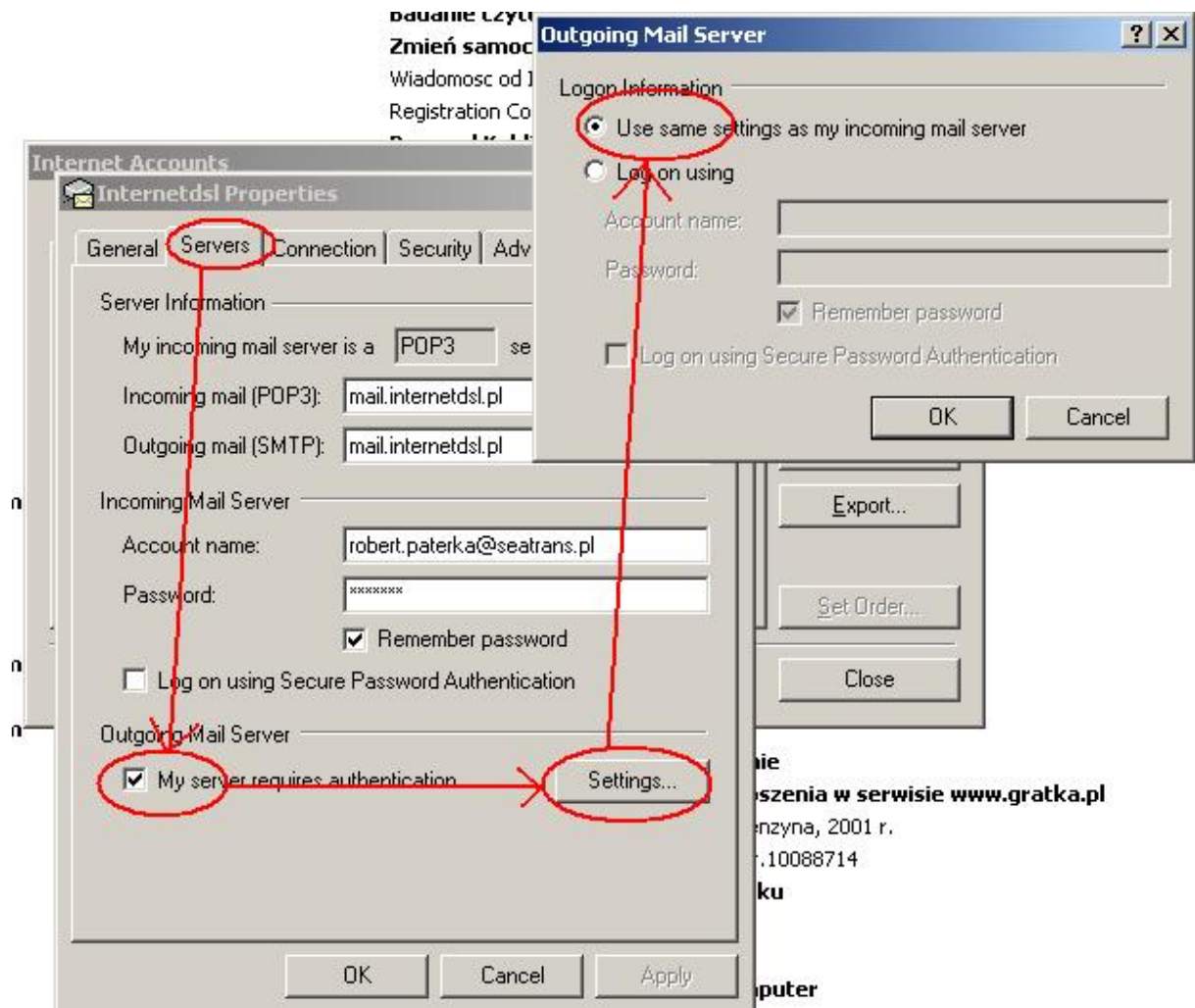
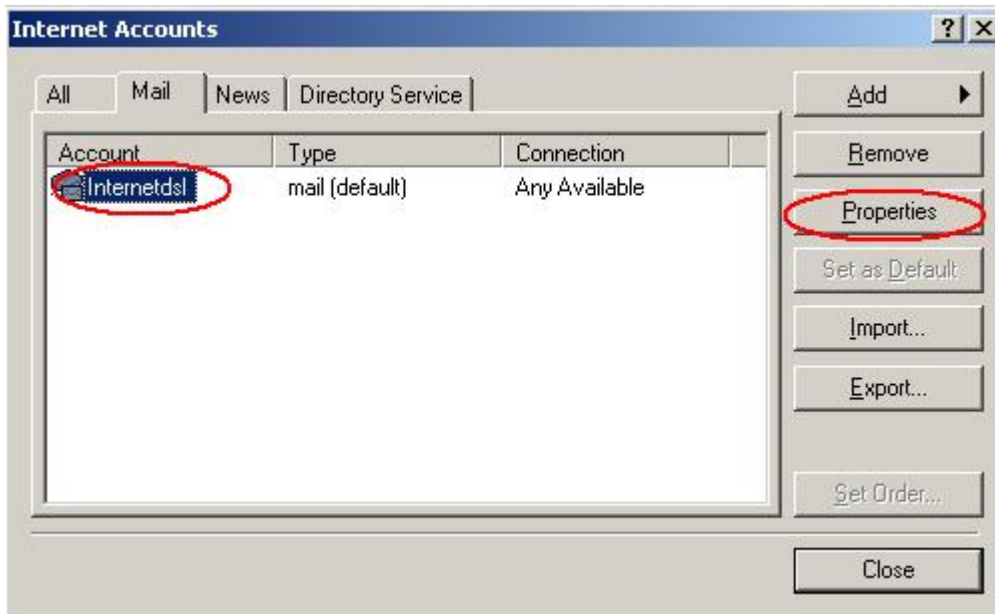
**Congratulations** [Help Icon]

You have successfully entered all of the information required to set up your account.

To save these settings, click Finish.

< Back   Finish   Cancel

- Because of some e-mail server requirements you need to make one extra step. See following pictures:



From now your e-mail box is configured. To test it you can send any e-mail to yourself.